



# BHARTIYA SKILL DEVELOPMENT UNIVERSITY

Registration No.: .....

## School of Metal Construction Skills

Session: 2020-21 (Summer Semester)

B. Voc. Program, 3<sup>rd</sup> Semester,

End-Sem. Examination 2021-22

### Set-A

Course Code: GEN1302

Time: 2 Hour

Course Name: Computer Aided Drawing

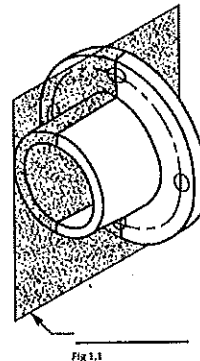
Max. Marks: 50

#### Instruction:

1. Attempt all questions.
2. Section A contains 10 Questions. Each question carries 1 Marks.
3. Section B contains 04 Questions. Each question carries 4 Marks.
4. Section C contains 04 Questions. Each question carries 6 Marks

#### Section – A

10X01 = 10 Marks



1. What does this plane called as shown in fig 1.1?
  - a) Side plane.
  - b) Front plane.
  - c) Cutting plane.
  - d) None of the above
2. Distance from the observer to the object is finite and the object is viewed from single point, is a characteristic of which view?
  - a) parallel view
  - b) prospective view
  - c) both (a) and (b)
  - d) none of the above
3. Which element of Vernier caliper is required to measure length of the steps?
  - a) Depth rod.
  - b) To clean the face
  - c) To reduce the diameter
  - d) None of the above
4. Which of the following measuring instrument can measure internal diameter?



## BHARTIYA SKILL DEVELOPMENT UNIVERSITY

- a) Height gauge
  - b) micrometer
  - c) Hole test micro meter
  - d) bevel
5. Standard size of drawing sheet as per BIS for A3 sheet?
- a) 841mm X 1189mm
  - b) 549mm X 841mm
  - c) 420mm X 594mm
  - d) 297mm X 420mm
6. Which component support the cylindrical workpiece to measure the diameter?
- a) Anvil
  - b) Frame
  - c) Ratchet
  - d) Main scale
7. The largest permeable size is known as
- a) Maximum size
  - b) Minimum size
  - c) Tolerance
  - d) Actual size
8. The combination of nominal size and deviation is called-
- a) Upper deviation
  - b) Lower deviation
  - c) Fit dimension
  - d) deviation
9. How many numbers of basic tolerance grades are there?
- a) 15
  - b) 20
  - c) 15
  - d) 7
10. What proportion of scale we use to draw a center line?
- a) 6:2
  - b) 6:1
  - c) 6:3
  - d) 6:4

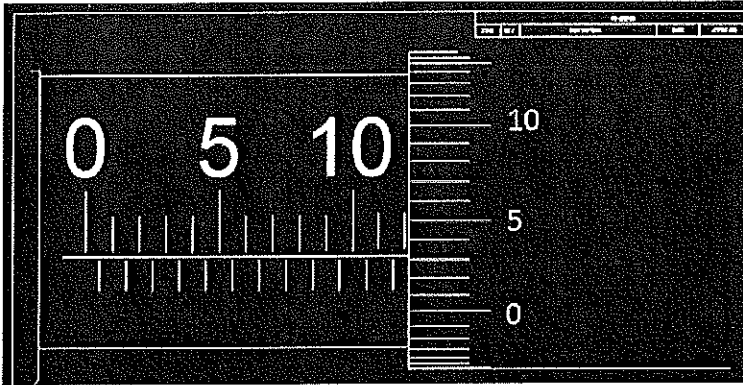


# BHARTIYA SKILL DEVELOPMENT UNIVERSITY

## Section – B

04X04 = 16 Marks

11. Identify the reading on the micrometer



12. Define parallel projection?

13. Define prospective projection?

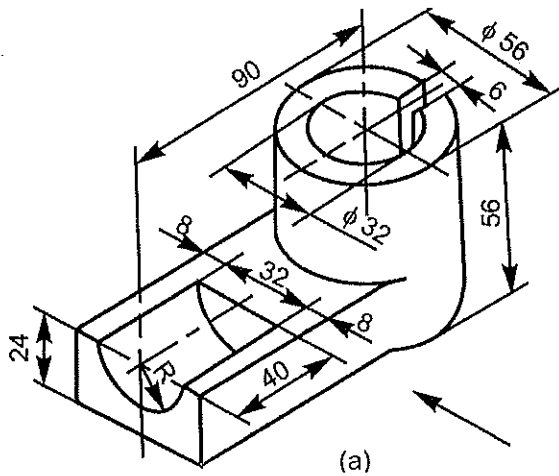
14. What is orthographic projection?

## Section – C

04X06 = 24 Marks

15. Explain is first angle projection?

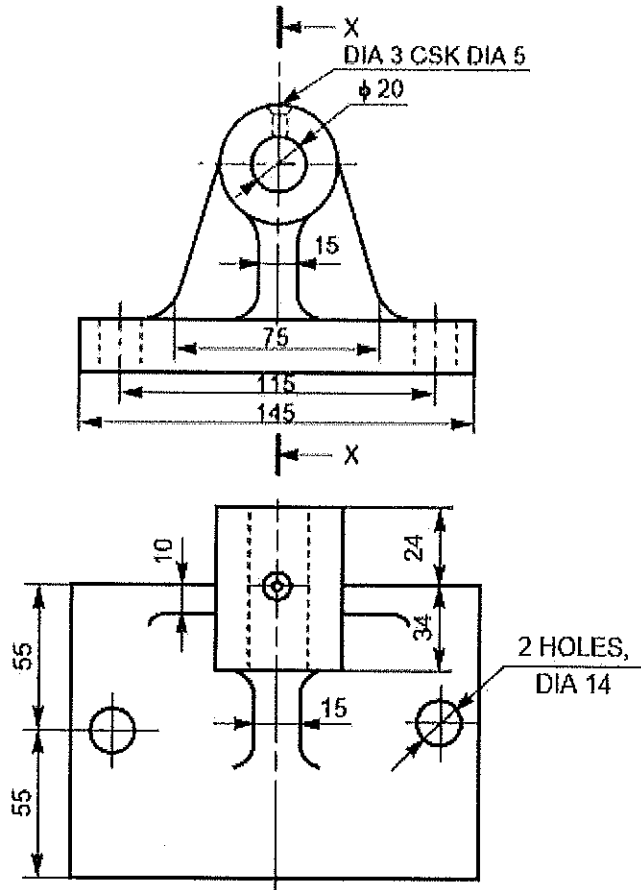
16. Draw the orthographic projection of given view and also draw a section view along the top plane



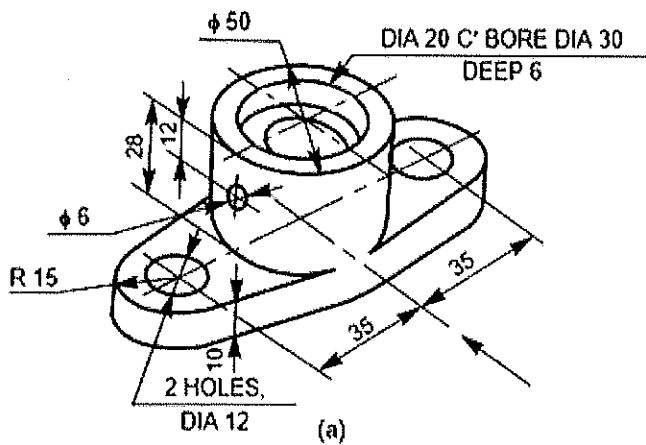


# BHARTIYA SKILL DEVELOPMENT UNIVERSITY

17. Draw the section view along the X-X line



18. Draw the orthographic projection of given view?



## School of Metal Construction Skills

Session: 2020-21 (Summer Semester)

B. Voc. Program, 3<sup>rd</sup> Semester,

End-Sem. Examination 2021-22

Set-A

Course Code: GEN1302

Course Name: Computer Aided Drawing

Time: 2 Hour

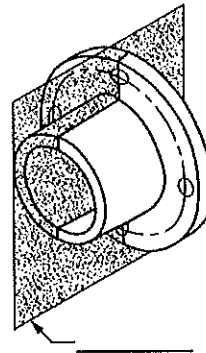
Max. Marks: 50

**Instruction:**

1. Attempt all questions.
2. Section A contains 10 Questions. Each question carries 1 Marks.
3. Section B contains 04 Questions. Each question carries 4 Marks.
4. Section C contains 04 Questions. Each question carries 6 Marks

**Answer Key**

**Section – A**



10X01 = 10 Marks

1. What does this plane called as shown in fig 1.1?
  - a) Side plane.
  - b) Front plane.
  - c) **Cutting plane.**
  - d) None of the above
2. Distance from the observer to the object is finite and the object is viewed from single point, is a characteristic of which view?
  - a) parallel view
  - b) **perspective view**
  - c) both (a) and (b)
  - d) none of the above
3. Which element of Vernier caliper is required to measure length of the steps?
  - a) **Depth rod.**
  - b) To clean the face
  - c) To reduce the diameter
  - d) None of the above
4. Which of the following measuring instrument can measure internal diameter?
  - a) Height gauge
  - b) micrometer
  - c) **Hole test micro meter**
  - d) Bevel



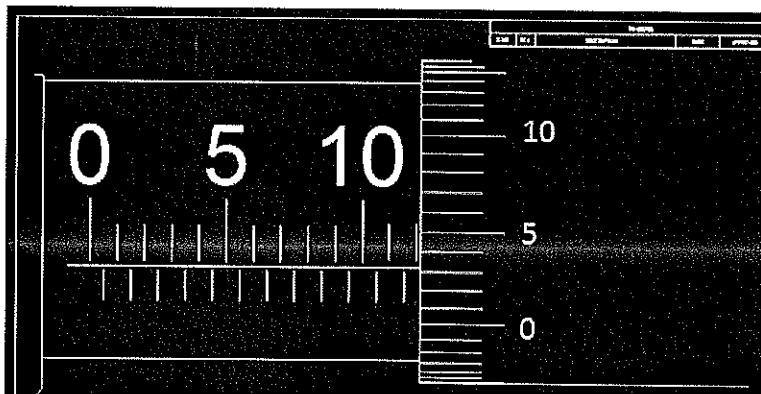
# BHARTIYA SKILL DEVELOPMENT UNIVERSITY

5. Standard size of drawing sheet as per BIS for A3 sheet?
  - a) 841mm X 1189mm
  - b) 549mm X 841mm
  - c) 420mm X 594mm
  - d) **297mm X 420mm**
6. Which component support the cylindrical workpiece to measure the diameter?
  - a) **Anvil**
  - b) Frame
  - c) Ratchet
  - d) Main scale
7. The largest permeable size is known as
  - a) **Maximum size**
  - b) Minimum size
  - c) Tolerance
  - d) Actual size
8. The combination of nominal size and deviation is called-
  - a) Upper deviation
  - b) Lower deviation
  - c) **Fit dimension**
  - d) deviation
9. How many numbers of basic tolerance grades are there?
  - a) 15
  - b) **20**
  - c) 15
  - d) 7
10. What proportion of scale we use to draw a center line?
  - a) 6:2
  - b) **6:1**
  - c) 6:3
  - d) 6:4

## Section – B

04X04 = 16 Marks

11. Identify the reading on the micrometer



Ans. 11.53mm

12. Define parallel projection?

Ans parallel projection

- Distance from the observer to the object is infinite; Projection lines are parallel and object is positioned at infinity.
- Less realistic but easier to draw.

13. Define prospective projection?

Ans prospective projection

- Distance from the observer to the object is finite and the object is viewed from a single point projectors are not parallel.
- Perspective projections mimic what the human eyes see, however, they are difficult to draw.

14. What is orthographic projection?

Ans Orthographic projection is a Parallel Projection Technique in which the plane of projection is perpendicular to the parallel line of sight.

There are two ways of drawing in orthographic - First Angle and Third Angle.

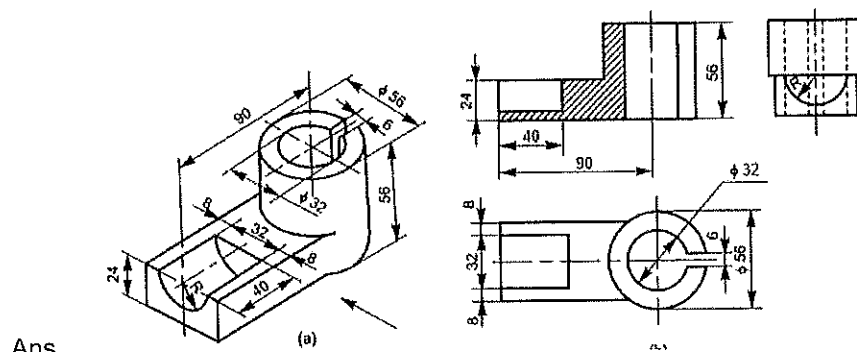
### Section – C

04X06 = 24 Marks

15. Explain is first angle projection?

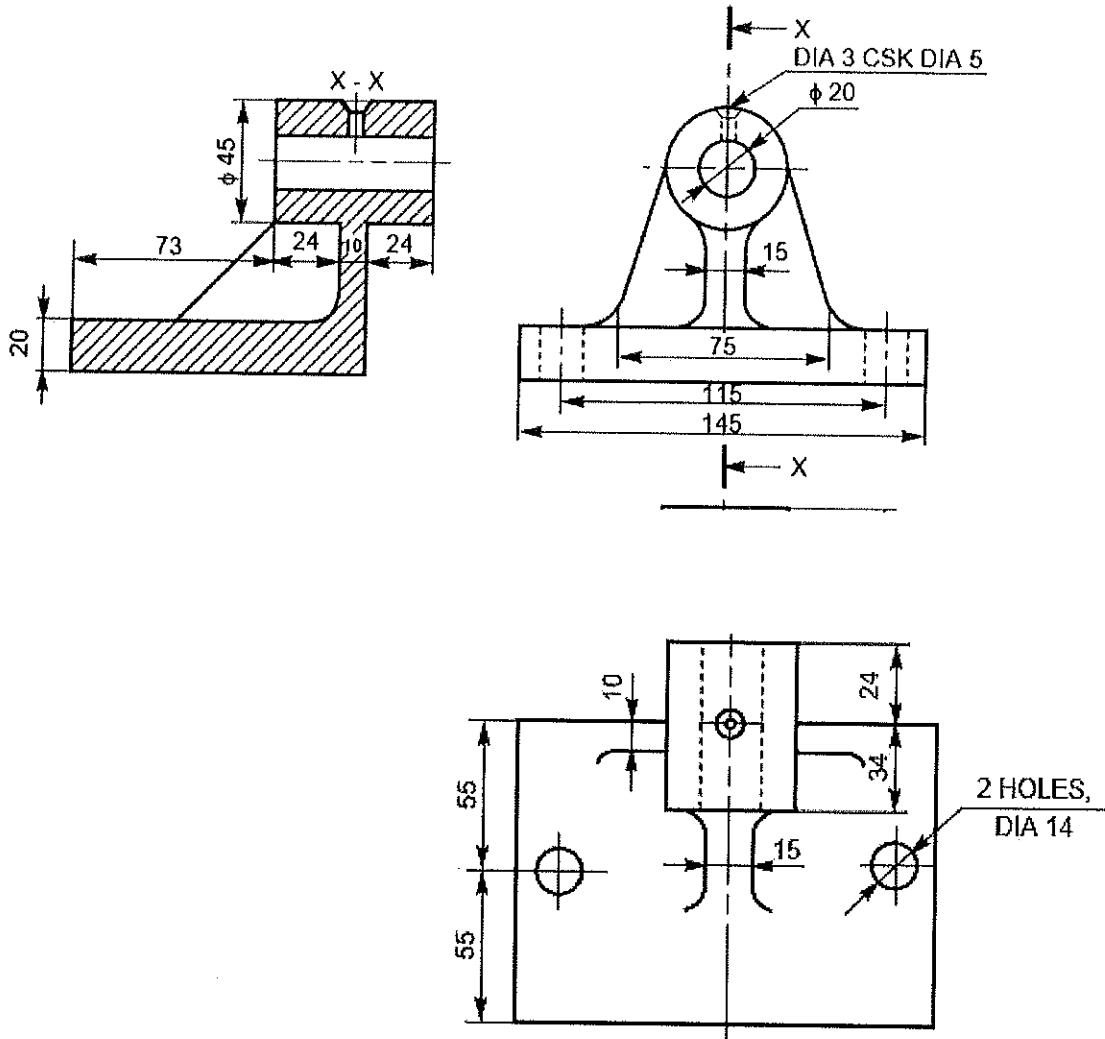
- Ans In this the object is assumed to be positioned in the first quadrant
- The object is assumed to be positioned in between the projection planes and the observer. The views are obtained by projecting the images on the respective planes.
- Note that the right hand side view is projected on the plane placed at the left of the object.
- After projecting on to the respective planes, the bottom plane and left plane is unfolded on to the front view plane. i.e. the left plane is unfolded towards the left side to obtain the Right hand side view on the left side of the Front view and aligned with the Front view. The bottom plane is unfolded towards the bottom to obtain the Top view below the Front view and aligned with the Front View.

16. Draw the orthographic projection of given view and also draw a section view along the top plane

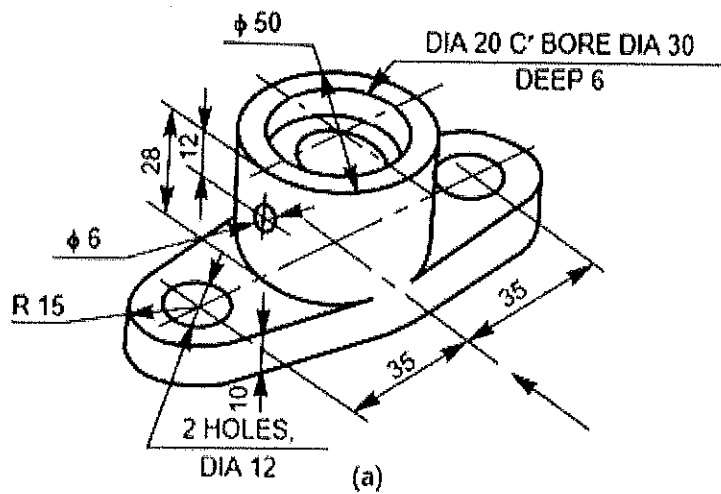


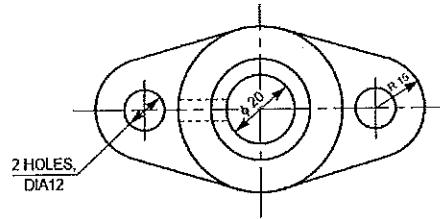
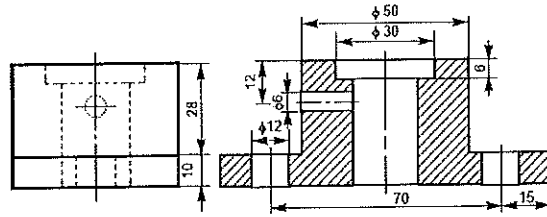
Ans

17. Draw the section view along the X-X line



18. Draw the orthographic projection of given view?









# BHARTIYA SKILL DEVELOPMENT UNIVERSITY

Registration No.: .....

## School of Metal Construction Skills

Session: 2020-21 (Summer Semester)

B. Voc. Program, 3<sup>rd</sup> Semester,

End-Sem. Examination 2021-22

Set-B

Course Code: GEN1302

Course Name: Computer Aided Drawing

Time: 2 Hour

Max. Marks: 50

### Instruction:

1. Attempt all questions.
2. Section A contains 10 Questions. Each question carries 1 Marks.
3. Section B contains 04 Questions. Each question carries 4 Marks.
4. Section C contains 04 Questions. Each question carries 6 Marks

### Section – A

10X01 = 10 Marks

1. Distance from the observer to the object is finite and the object is viewed from single point, is a characteristic of which view?
  - a) parallel view
  - b) prospective view
  - c) both (a) and (b)
  - d) none of the above
2. Which element of Vernier caliper is required to measure length of the steps?
  - a) Depth rod.
  - b) To clean the face
  - c) To reduce the diameter
  - d) None of the above
3. Which of the following measuring instrument can measure internal diameter?
  - a) Height gauge
  - b) micrometer
  - c) Hole test micro meter
  - d) bevel
4. What does this plane called as shown in fig 1.1?
  - a) Side plane.
  - b) Front plane.

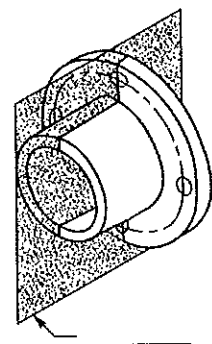


Fig 1.1



## BHARTIYA SKILL DEVELOPMENT UNIVERSITY

- c) Cutting plane.
  - d) None of the above
5. Standard size of drawing sheet as per BIS for A3 sheet?
- a) 841mm X 1189mm
  - b) 549mm X 841mm
  - c) 420mm X 594mm
  - d) 297mm X 420mm
6. The largest permeable size is known as
- a) Maximum size
  - b) Minimum size
  - c) Tolerance
  - d) Actual size
7. The combination of nominal size and deviation is called-
- a) Upper deviation
  - b) Lower deviation
  - c) Fit dimension
  - d) deviation
8. Which component support the cylindrical workpiece to measure the diameter?
- a) Anvil
  - b) Frame
  - c) Ratchet
  - d) Main scale
9. How many numbers of basic tolerance grades are there?
- a) 15
  - b) 20
  - c) 15
  - d) 7
10. What proportion of scale we use to draw a center line?
- a) 6:2
  - b) 6:1
  - c) 6:3
  - d) 6:4

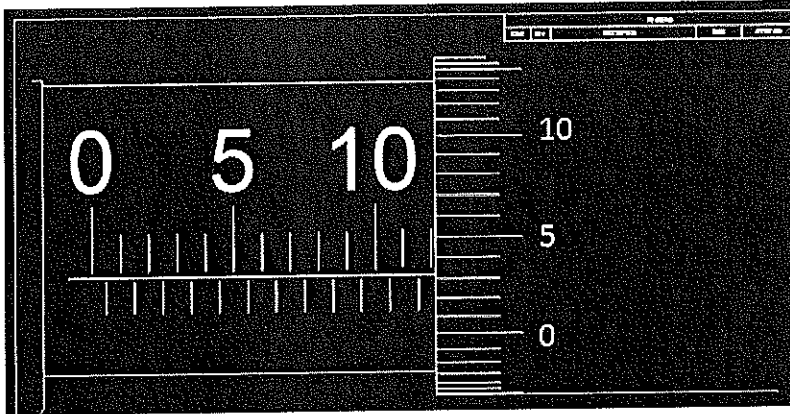


# BHARTIYA SKILL DEVELOPMENT UNIVERSITY

## Section – B

04X04 = 16 Marks

11. Identify the reading on the micrometer

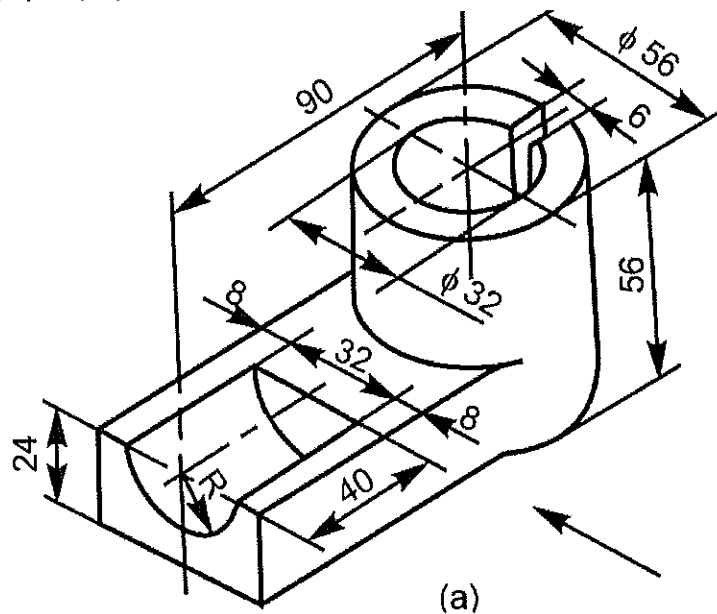


12. Define parallel projection?
13. What is orthographic projection?
14. Define perspective projection?

## Section – C

04X06 = 24 Marks

15. Draw the orthographic projection of given view and also draw a section view along the top plane

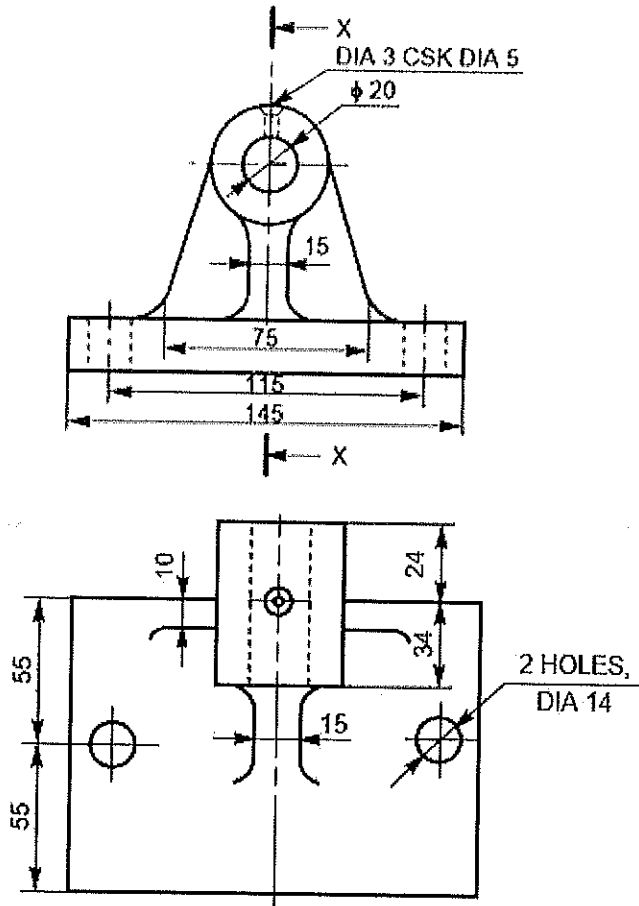


16. Explain is first angle projection

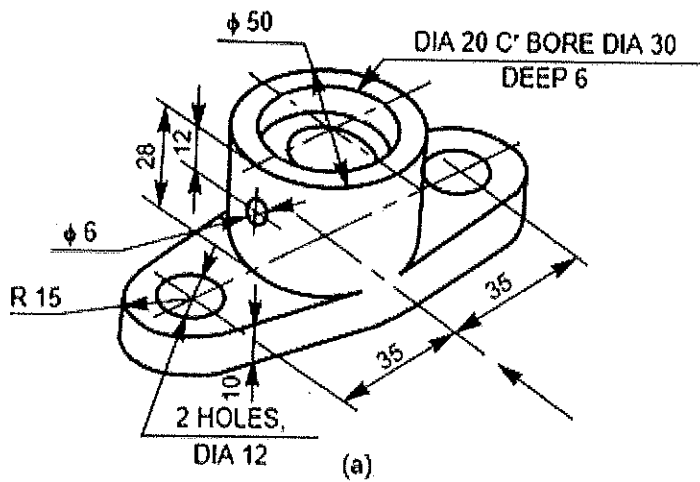


# BHARTIYA SKILL DEVELOPMENT UNIVERSITY

17. Draw the section view along the X-X line



18. Draw the orthographic projection of given view?





# BHARTIYA SKILL DEVELOPMENT UNIVERSITY

Registration No.: .....

## School of Metal Construction Skills

Session: 2020-21 (Summer Semester)

B. Voc. Program, 3<sup>rd</sup> Semester,

End-Sem. Examination 2021-22

Set-A

Course Code: GEN1302

Course Name: Computer Aided Drawing

Time: 2 Hour

Max. Marks: 50

### Instruction:

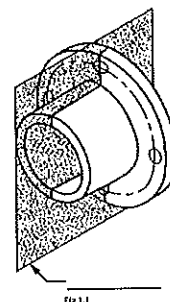
1. Attempt all questions.
2. Section A contains 10 Questions. Each question carries 1 Marks.
3. Section B contains 04 Questions. Each question carries 4 Marks.
4. Section C contains 04 Questions. Each question carries 6 Marks

### Answer Key

#### Section – A

10X01 = 10 Marks

1. Distance from the observer to the object is finite and the object is viewed from single point, is a characteristic of which view?
  - a) parallel view
  - b) perspective view**
  - c) both (a) and (b)
  - d) none of the above
2. Which element of Vernier caliper is required to measure length of the steps?
  - a) Depth rod.**
  - b) To clean the face
  - c) To reduce the diameter
  - d) None of the above
3. Which of the following measuring instrument can measure internal diameter?
  - a) Height gauge
  - b) micrometer
  - c) Hole test micro meter**
  - d) bevel
4. What does this plane called as shown in fig 1.1?
  - a) Side plane.
  - b) Front plane.
  - c) Cutting plane.**
  - d) None of the above
5. Standard size of drawing sheet as per BIS for A3 sheet?
  - a) 841mm X 1189mm**





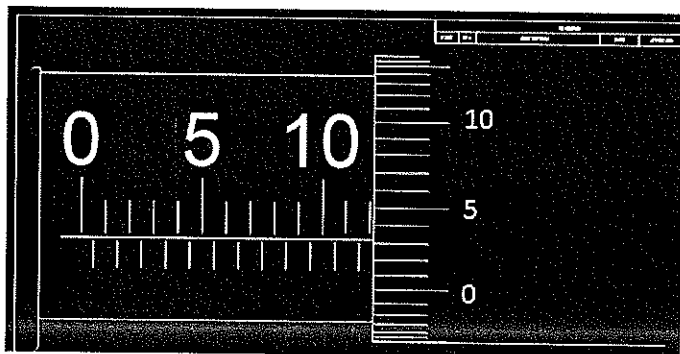
# BHARTIYA SKILL DEVELOPMENT UNIVERSITY

- b) 549mm X 841mm
  - c) 420mm X 594mm
  - d) **297mm X 420mm**
6. The largest permeable size is known as
- a) **Maximum size**
  - b) Minimum size
  - c) Tolerance
  - d) Actual size
7. The combination of nominal size and deviation is called-
- a) Upper deviation
  - b) Lower deviation
  - c) **Fit dimension**
  - d) deviation
8. Which component support the cylindrical workpiece to measure the diameter?
- a) **Anvil**
  - b) Frame
  - c) Ratchet
  - d) Main scale
9. How many numbers of basic tolerance grades are there?
- a) 15
  - b) **20**
  - c) 15
  - d) 7
10. What proportion of scale we use to draw a center line?
- a) 6:2
  - b) **6:1**
  - c) 6:3
  - d) 6:4

## Section – B

04X04 = 16 Marks

11. Identify the reading on the micrometer



Ans. 11.53mm

12. Define parallel projection?

Ans parallel projection

# BHARTIYA SKILL DEVELOPMENT UNIVERSITY

- Distance from the observer to the object is infinite; Projection lines are parallel and object is positioned at infinity.
- Less realistic but easier to draw.

13. What is orthographic projection?

Ans Orthographic projection is a Parallel Projection Technique in which the plane of projection is perpendicular to the parallel line of sight.

There are two ways of drawing in orthographic - First Angle and Third Angle.

14. Define prospective projection?

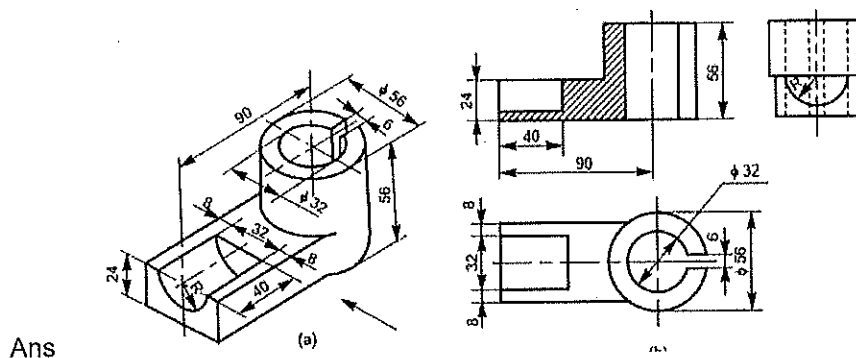
Ans prospective projection

- Distance from the observer to the object is finite and the object is viewed from a single point projector are not parallel.
- Perspective projections mimic what the human eyes see, however, they are difficult to draw.

### Section – C

04X06 = 24 Marks

15. Draw the orthographic projection of given view and also draw a section view along the top plane



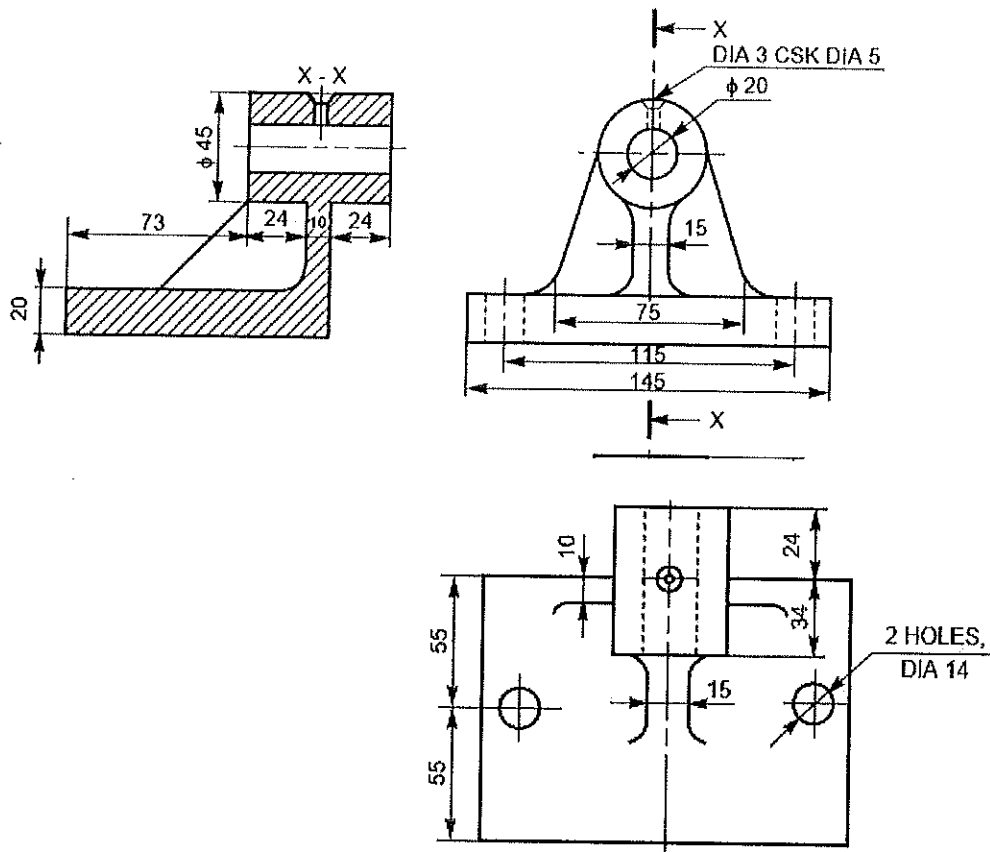
16. Explain is first angle projection?

- Ans In this the object is assumed to be positioned in the first quadrant
- The object is assumed to be positioned in between the projection planes and the observer. The views are obtained by projecting the images on the respective planes.
- Note that the right hand side view is projected on the plane placed at the left of the object.
- After projecting on to the respective planes, the bottom plane and left plane is unfolded on to the front view plane. i.e. the left plane is unfolded towards the left side to obtain the Right hand side view on the left side of the Front view and aligned with the Front view. The bottom plane is unfolded towards the bottom to obtain the Top view below the Front view and aligned with the Front View.



# BHARTIYA SKILL DEVELOPMENT UNIVERSITY

17. Draw the section view along the X-X line



18. Draw the orthographic projection of given view?

